

Borough Council of
**King's Lynn &
West Norfolk**



Regeneration and Development Panel
Wednesday, 27th January, 2016 at 4.00 pm
in the Committee Suite, King's Court, Chapel Street,
King's Lynn

Reports marked to follow on the Agenda and/or Supplementary Documents

8. **Hunstanton Heritage Gardens HLF Stage 2 Submission (Pages 2 - 10)**

Contact

Democratic Services
Borough Council of King's Lynn and West Norfolk
King's Court
Chapel Street
King's Lynn
Norfolk
PE30 1EX
Tel: 01553 616394
Email: democratic.services@west-norfolk.gov.uk



Hunstanton Heritage Gardens

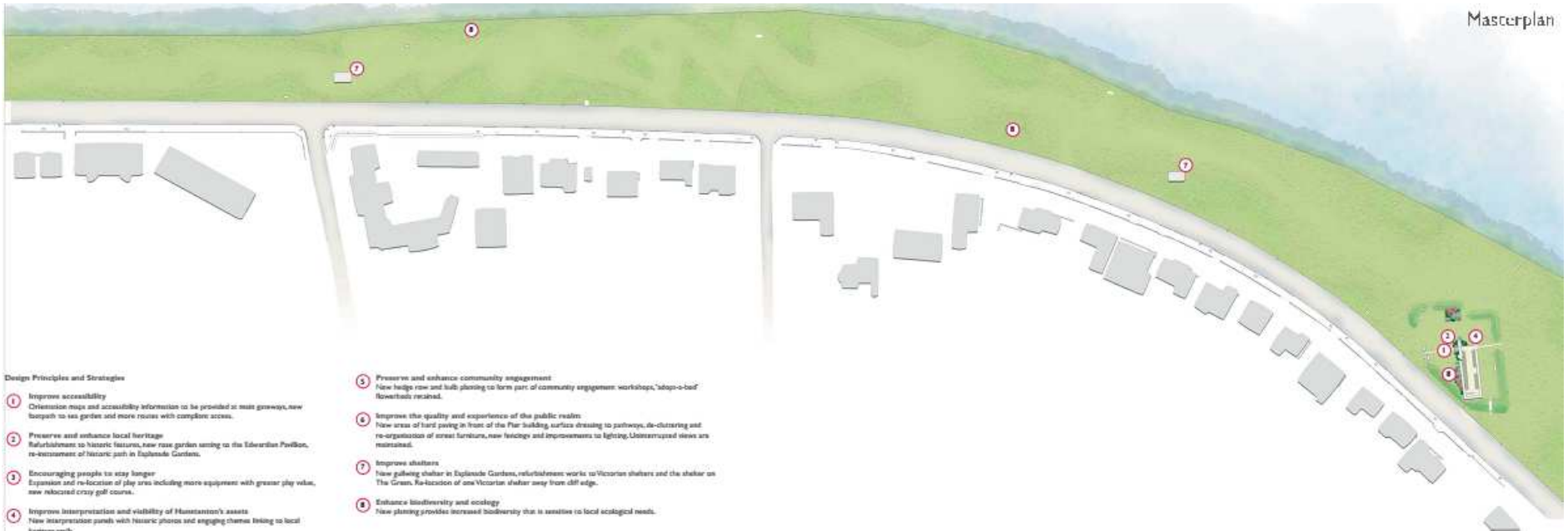
2

Laura Hampshire – Regeneration Projects
Officer



Masterplan





Design Principles and Strategies

- 1 **Improve accessibility**
Orientation maps and accessibility information to be provided at main gateways, new footpath to sea garden and more routes with complete access.
- 2 **Preserve and enhance local heritage**
Re-establishment of historic features, new rose garden facing to the Edwardian Pavilion, re-creation of historic path in Esplanade Gardens.
- 3 **Encouraging people to stay longer**
Expansion and re-location of play area including more equipment with greater play value, new relocated crazy golf course.
- 4 **Improve interpretation and visibility of Hunstanton's assets**
New interpretation panels with historic photos and engaging themes linking to local...
- 5 **Preserve and enhance community engagement**
New hedge row and bulb planting to form part of community engagement workshops, 'adopt-a-hed' flowerbeds retained.
- 6 **Improve the quality and experience of the public realm**
New areas of hard paving in front of the Pier building, surface dressing to pathways, re-clustering and re-organisation of street furniture, new benches and improvements to lighting. Unobstructed views are maintained.
- 7 **Improve shelters**
New gulling shelter in Esplanade Gardens, refurbishment works to Victorian shelters and the shelter on The Green. Re-location of one Victorian shelter away from cliff edge.
- 8 **Enhance biodiversity and ecology**
New planting provides increased biodiversity that is sensitive to local ecological needs.



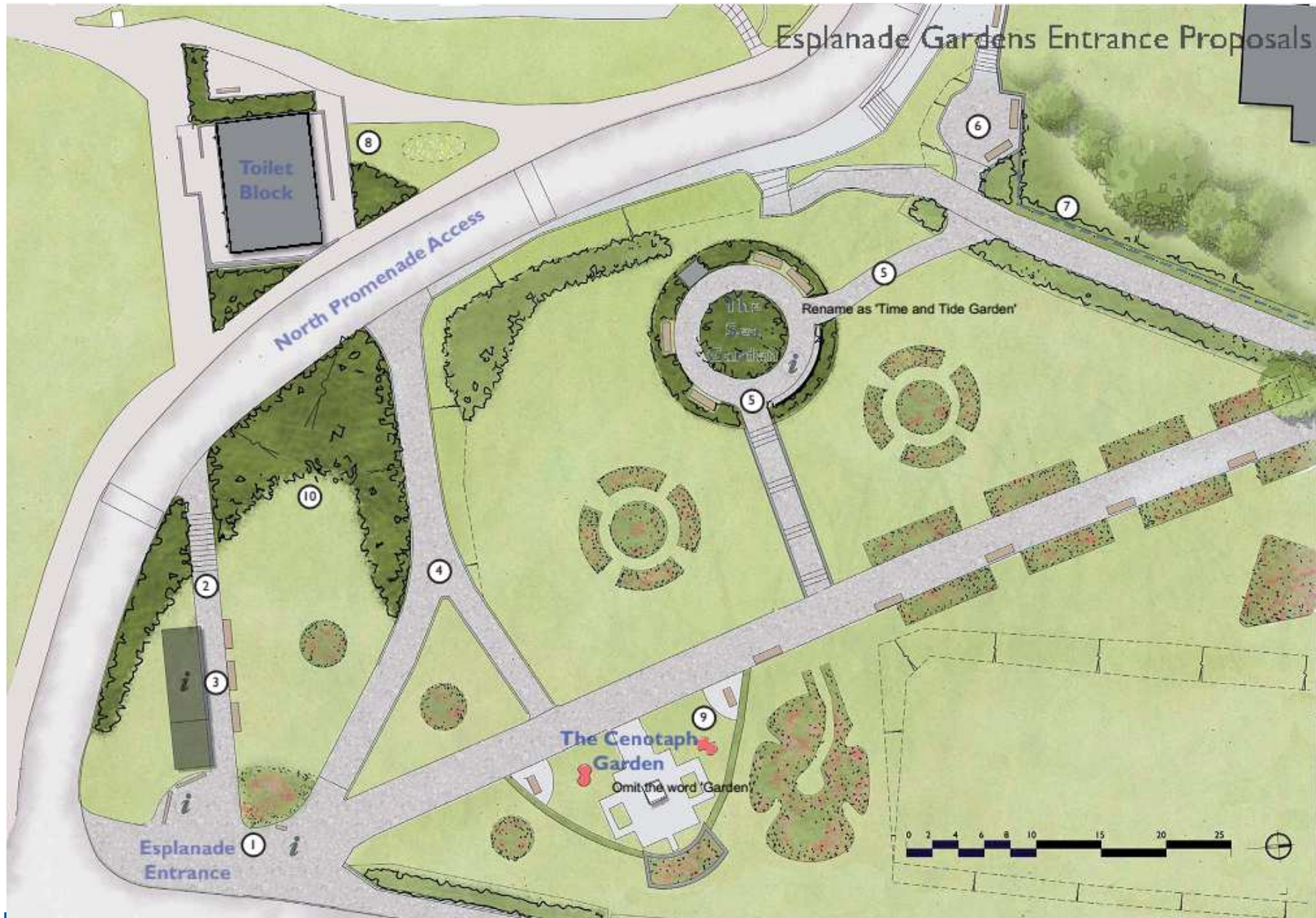
The Green Proposals



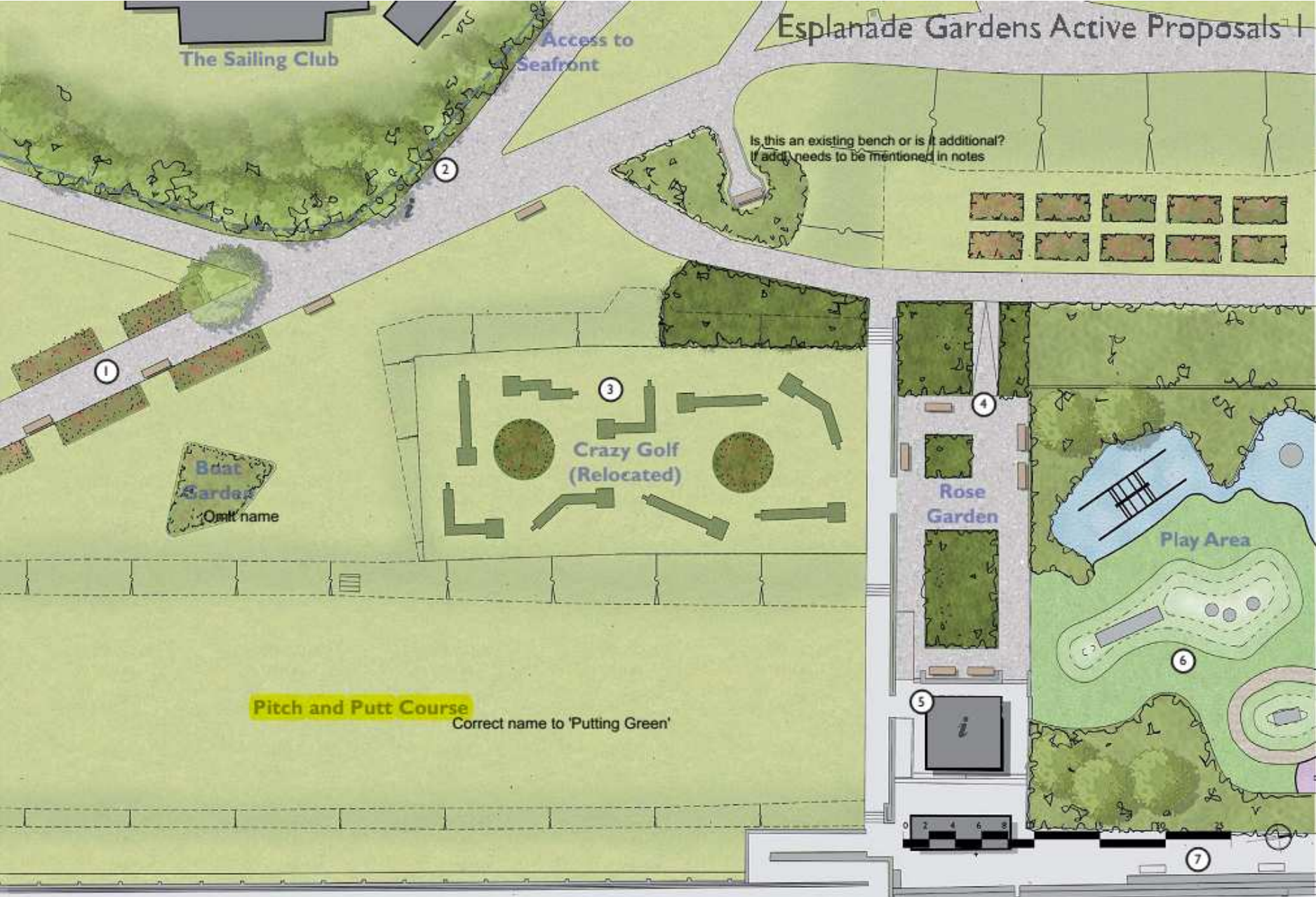
5



Esplanade Gardens Entrance Proposals



Esplanade Gardens Active Proposals



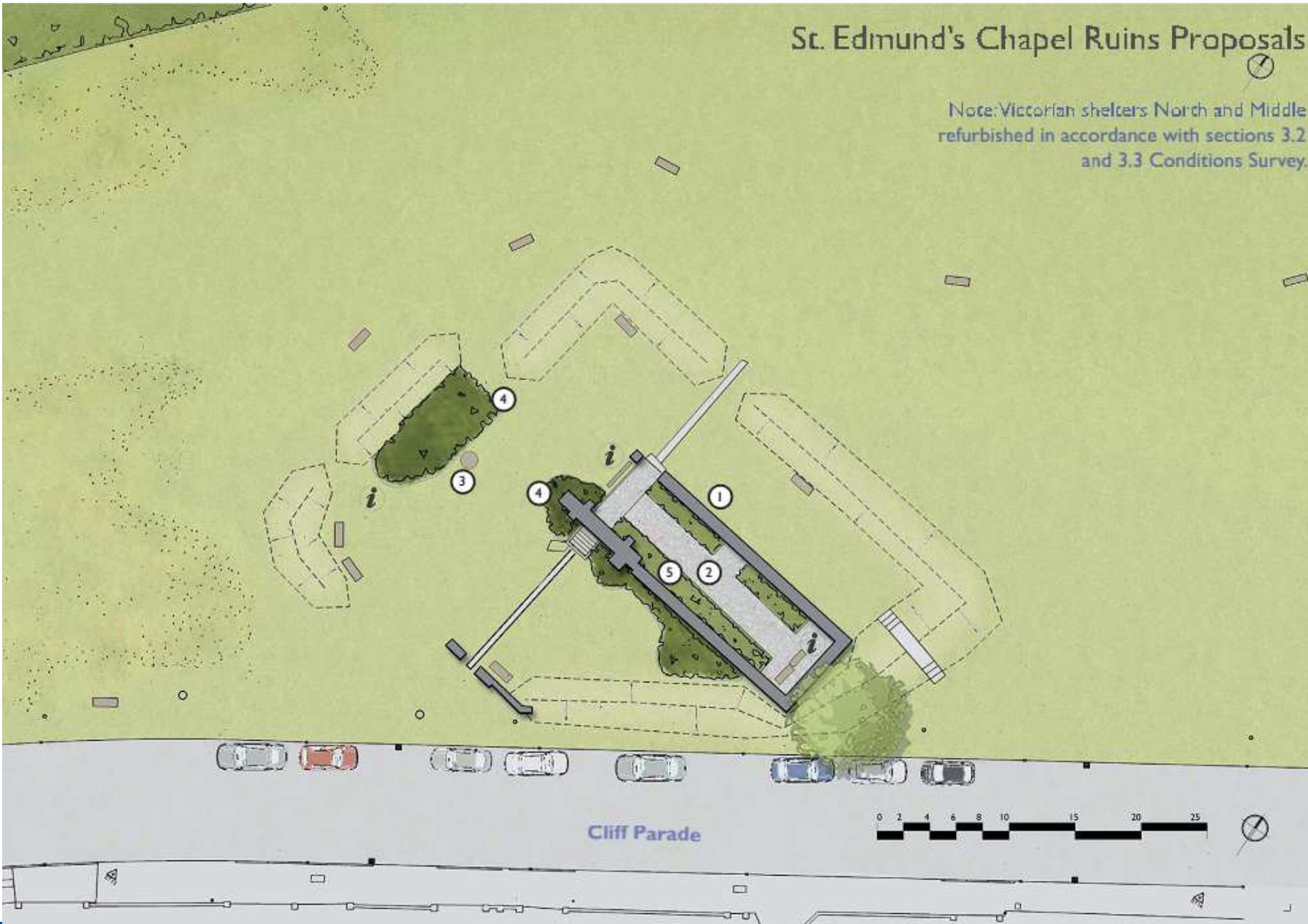
7





St. Edmund's Chapel Ruins Proposals

Note: Victorian shelters North and Middle refurbished in accordance with sections 3.2 and 3.3 Conditions Survey.



10

